

Flookburgh CofE Primary School



Love, laugh and learn together

## Mission Statement

*Through our Christian Values of **Respect, Hope, Compassion and Forgiveness**, we aim to **Love, Laugh and Learn Together!***

# EQUALITY POLICY & SINGLE EQUALITY SCHEME

## 2016 – 2019

**APPROVED BY:**

Name: Mrs D Milner

Position: Chair of Governors

Signed: *Mrs D Milner*

Date: December 2016

Review Date: December 2019

## REVIEW SHEET

The information in the table below details earlier versions of this document with a brief description of each review and how to distinguish amendments made since the previous version date (if any).

Version Number	Version Description	Date of Revision
Version 1	Original	December 2016
Version 2	Revised and Amended	January 2018

## Contents:

EQUALITY POLICY STATEMENT .....	5
PART 1- SINGLE EQUALITY SCHEME .....	6
1. Aims of the Single Equality Scheme .....	6
2. Purpose of the Equality Scheme.....	6
3. Planning to Eliminate Discrimination and Promote Equality of Opportunity .....	6
4. Roles and Responsibilities for Implementing the Single Equality Scheme .....	7
The Governing Body will:.....	7
The Head teacher (or Senior Leader responsible for Equalities) will: .....	7
All Staff: teaching and non-teaching and Other Adults involved with our School will: .....	8
Pupils will:.....	8
5. School Aims Statements .....	8
Staffing and Employment .....	8
Pupils' Attainment and Progress .....	9
Curriculum Development and Delivery .....	9
Pupil Welfare and Pastoral Care.....	9
The Quality of Provision – Curriculum and Other Activities.....	10
Behaviour and Attendance.....	11
Partnership with Pupils, Parents, Carers and the Wider Community .....	12
Leadership and Management.....	12
Linguistic Diversity.....	13
Gender Equality .....	13
Admissions and Exclusions .....	14
PART 2.....	15
1. Our School Profile .....	15
2. Disability Equality Duties .....	16
3. Racial Equality Duty and Community Cohesion .....	16
4. Gender Equality Duties.....	17
5. Religion and Belief Equality Duties.....	17
6. Sexual Orientation Equality Duties.....	18
7. Pregnancy and Maternity Equality Duties .....	<b>Error! Bookmark not defined.</b>
8. Publication of the Single Equality Scheme .....	18
9. Complaints.....	18
Part 3 – Equality Objectives/Action Plan.....	<b>Error! Bookmark not defined.</b>
Appendix A – Key Legislation	
Appendix B – Process Chart for the Development and Review of Equality Scheme, Objectives and Action Plan	

## EQUALITY POLICY STATEMENT

At Flookburgh CE Primary School, we are committed to ensuring equality of education and opportunity for all pupils, staff, parents and carers receiving services from our school, irrespective of race, gender, disability, faith or religion or socio-economic background. We aim to develop a culture of inclusion and diversity in which all those connected to our school feel proud of their identity and are able to participate fully in school life.

We have taken an organisational approach and have ensured that all equality strands are woven into the everyday working of our school, particularly in relation to formulating policy and practice around both delivery of our service and employment but also in relation to other functions such as setting budgets, making public appointments and funding.

The achievement of pupils will be monitored by race, gender and disability and we will use this data to support pupils, raise standards and ensure inclusive teaching. We will tackle discrimination by the positive promotion of equality, challenging bullying and stereotypes and creating an environment which champions respect for all. At Flookburgh CE Primary School we believe that diversity is a strength, which should be respected and celebrated by all those who learn, teach and visit here.

The Single Equality Scheme (SES) to which this Policy Statement relates also highlights how our school has worked with and listened to the staff, pupils, parents and carers to inform development of objectives and action plans and the need and commitment required to ensure the Scheme is a success. This is underpinned by a commitment to promoting positive relationships and understanding between all groups within our school community.

The SES sets out how pupils with the following protected characteristics (previously known as equality strands) will be protected in our school from harassment and discrimination:-

- Disability
- Gender
- Race
- Religion and belief
- Sexual orientation
- Gender reassignment
- Pregnancy and maternity

This Scheme extends, however, to cover all aspects of vulnerability, including those associated with socio-economic factors (e.g. pupils from low income families), Children Looked After and those with Child Protection plans.

As well as delivering high quality services to our pupils, the school is also committed to being a good employer and as such the Scheme outlines how we meet our varied duties in terms of recruitment and employment practices. We are also committed to be fully inclusive of all community users, including parents and carers. As such, the Scheme therefore also sets out how we will work to overcome any discrimination related to the other protected characteristics:-

- Age
- Being married or in a civil partnership

This Policy Statement and Single Equality Scheme will be reviewed every three years and is reported on to the Governing Body annually.

Signed: \_\_\_\_\_ (Head teacher) Date: \_\_\_\_\_

Signed: \_\_\_\_\_ (Chair of Govs) Date: \_\_\_\_\_

## **PART 1- SINGLE EQUALITY SCHEME**

### **1. Aims of the Single Equality Scheme**

- To articulate this school's commitment to equality which permeates all school policies and practices
- To ensure that everyone who belongs to, or comes into contact with, our school community is valued and respected
- To promote equality of opportunity and eliminate unlawful discrimination, harassment or victimisation
- To comply with statutory duties under equalities legislation in one document

### **2. Purpose of the Equality Scheme**

This Equality Scheme is our school's response to the specific and general duties in the current equality legislation, which has been brought together under the Equality Act 2010 (see Appendix A). It is an attempt to capture how we are systematically establishing and implementing good practice in equality and diversity

This Equality Scheme sets out how we will:

- develop and review the Scheme and Action Plan (See Appendix B)
- eliminate discrimination
- eliminate harassment or victimisation related to any aspect of social identity or diversity;
- promote equality of opportunity;
- promote positive attitudes to all aspects of social identity and diversity;
- encourage participation by disabled people and people representing different aspects of social identity in public life;
- take steps to take account of difference even where that involves treating some people more favourably than others;
- take proportionate action to address the disadvantage faced by particular group of pupils.

### **3. Planning to Eliminate Discrimination and Promote Equality of Opportunity**

This Scheme is underpinned by the core belief that all children and young people belong to their local community and share the same rights to membership of that community and a quality education. An Action Plan linked to our objectives accompanies this Equality Scheme which identifies what we will be doing over the coming year and beyond to make our school more accessible to the whole community, irrespective of background or need. (See Part 3).

It encompasses our duties to promote positive outcomes in relation to race, gender and disability, but also identifies actions to address other social identities. It encompasses our anticipatory duties to plan ahead for the reasonable adjustments (reasonable and proportionate steps to overcome barriers that may impede some pupils) we need to make to be best placed to help disabled pupils who come or may come to our school.

The Objectives and action plan replace the school's Disability Accessibility Plan (previously required under the planning duties in the Disability Discrimination Act) as it sets out how we will increase access to education for disabled pupils, alongside other protected groups, in the three areas required:

- increasing the extent to which disabled pupils can participate in the school curriculum;
- improving the environment of the school to increase the extent to which disabled pupils can take advantage of education and associated services;
- improving the delivery to disabled pupils of information which is provided in writing for pupils who are not disabled.

The action plan is reviewed annually and progress towards the equality objectives within it is reported on regularly to the Governing Body. Equality objectives have been identified through consultation with key stakeholders including pupils, parents, Governors, staff and others in the community.

This action plan is understood and implemented by all staff and is available on the school website/on request. It will be made available in different formats and in different languages on request to the school office.

#### 4. Roles and Responsibilities for Implementing the Single Equality Scheme

##### ***The Governing Body will:***

- ensure that our school complies with all relevant equalities legislation;
- recommend all governors receive up-to-date training in all equalities duties;
- designate a governor with specific responsibility for the Single Equality Scheme;
- draw up, publish and implement our school's equality objectives;
- establish that the action plans arising from the Scheme are part of our School Development Plan;
- support the Head teacher in implementing any actions necessary;
- ensure that people are not discriminated against when applying for jobs at our school on grounds of race, gender, disability, faith/religion, age, gender reassignment etc.
- take all reasonable steps to ensure that our school environment gives access to people with disabilities, and also strive to make school communications as inclusive as possible for parents, carers and pupils;
- welcome all applications to join our school, whatever a child's socio-economic background, race, gender, disability, faith/religion etc;
- ensure that no child is discriminated against whilst in our school on account of their race, gender, disability, faith/religion etc;
- inform and consult with parents about the Scheme;
- evaluate and review the Scheme every three years;
- evaluate the objectives and action plan yearly.

##### ***The Head teacher (or Senior Leader responsible for Equalities) will:***

- ensure that staff and parents are informed about the Single Equality Scheme;
- ensure that staff understand the broad legal definition of disability;
- ensure that the Scheme is implemented effectively;
- manage any day to day issues arising from the Scheme whether for pupils, for our school as an employer or for our local community;
- ensure staff have access to training which helps to implement the Scheme;
- monitor the Scheme and report to the Governing Body at least annually, on the effectiveness of the Scheme, Objectives and Action Plan;
- ensure that the SLT are kept up to date with any development affecting the Scheme/action plan arising from the Scheme;
- provide appropriate support and monitoring for all pupils and specific and targeted pupils to whom the Scheme has direct relevance, with the assistance from relevant agencies;
- ensure that all appointments panels give due regard to this plan, so that no one is discriminated against when it comes to employment or training opportunities;
- promote the principle of equal opportunity when developing the curriculum, and promote respect for other people and equal opportunities to participate in all aspects of school life;
- treat all incidents of unfair treatment and any incidents of bullying or discrimination, including racist incidents, with due seriousness;
- report any incidents of racism in accordance with the Equality Act and LA guidance;

- deal with complaints of discrimination and harassment speedily and according to LA and national guidelines and notify complainants of the outcome and actions taken;
- in the event of expectations not being met, ensure action is taken in accordance with the status of those involved e.g. pupil, member of staff, volunteer etc..

**All Staff: teaching and non-teaching and Other Adults involved with our School will:**

- accept that this is a whole school issue and support the Single Equality Scheme;
- be aware of the Single Equality Scheme and how it relates to them;
- keep themselves up-to-date with relevant legislation and attend school organised training and information events;
- make known any queries or training requirements;
- ensure that all pupils are treated fairly, equally and with respect, and will maintain awareness of our school's Equality Scheme and its Equality Objectives;
- strive to provide material that gives positive images based on race, gender and disability, and challenges stereotypical images;
- ensure that pupils from all groups are included in all activities and have full access to the curriculum;
- promote equality and diversity through teaching and through relations with pupils, staff, parents, and the wider community;
- know how to deal with incidents of concern, and how to identify and challenge bias and stereotyping;
- know procedures for reporting incidents of racism, harassment or other forms of discrimination.

**Pupils will:**

- be involved in the development of the Scheme and will understand how it relates to them, appropriate to age and ability;
- be expected to act in accordance with any relevant part of the Scheme;
- experience a curriculum and environment which is respectful of diversity and difference and prepares them well for life in a diverse society;
- understand the importance of reporting discriminatory bullying and racially motivated incidents;
- ensure the peer support programme within our school promotes understanding and supports pupils who are experiencing discrimination.

## 5. School Aims Statements

### **Staffing and Employment**

Flookburgh CE Primary School complies fully with legislation which protects our staff (including teachers, teaching assistants, supervisors, student teachers) and other adults working in our school, from discrimination based on the protected characteristics. To do this we will:

- ensure that our staff are trained to help them understand their equality duties and/or the differing needs of protected groups within our school community and have mechanisms in place to identify areas for development;
- make such reasonable adjustments as are necessary to prevent a disabled person being at a substantial disadvantage in comparison with people who are not disabled;
- monitor recruitment and retention;
- invest in continued professional development opportunities for all staff;
- make efforts to ensure that the diversity of our workforce reflects that of our local community and wider society;
- not enquire about the health of an applicant until a job offer has been made or require job applicants to complete a generic 'all encompassing' health questionnaire as part of the

application procedure unless the questions are specifically related to an intrinsic function of the work – for example ensuring that applicants for a PE teaching post have the physical capability to carry out the duties;

- ensure the safety and well-being of our staff and take seriously and act on incidents of harassment and discrimination recognising that our staff may be either victims or perpetrators.

### ***Pupils' Attainment and Progress***

Flookburgh CE Primary School expects the highest possible standards. Staff have high expectations of all pupils and continually challenge them to reach higher standards.

The school recognises and values all forms of achievement. We will monitor and analyse pupil performance by ethnicity, gender, disability and special educational need and social background. Any disparities which are identified will be addressed through targeted curriculum planning, teaching and support.

### ***Curriculum Development and Delivery***

We aim to provide all our pupils with the opportunity to succeed, and to reach the highest level of personal achievement. To do this, we will:

- use contextual data to improve the ways in which we provide support to individuals and groups of pupils;
- monitor achievement data by ethnicity, gender and disability and action any gaps;
- encourage pupils to become independent and assist them in taking responsibility for the management of their own learning and behaviour;
- take account of the achievement of all pupils when planning for future learning and setting challenging targets;
- ensure equality of access for all pupils and prepare them for life in a diverse society;
- use materials that reflect the diversity of the school, population and local community in terms of race, gender and disability, without stereotyping;
- promote attitudes and values that will challenge racist and other discriminatory behaviour or prejudice;
- provide opportunities for pupils to appreciate their own culture and celebrate the diversity of other cultures;
- promote activities that celebrate our common experience as well as those that recognise diversity generally and foster understanding and respect for the culture and faith of all our pupils and their families;
- use self-assessment as a teaching-learning strategy, and we will provide all pupils with opportunities to take responsibility for their own learning through regular reflection and feedback on their progress;
- seek to involve all parents and carers in supporting their child's education;
- encourage classroom and staffroom discussion of equality issues which reflect on social stereotypes, expectations and their impact on learning;

### ***Pupil Welfare and Pastoral Care***

We aim to promote the health, safety and welfare of all the children and staff providing a caring and supportive pastoral system that takes account of their needs. To do this we will:

- develop and continually review a Health, Safety and Welfare Policy document;
- ensure that the details of this Scheme are shared with all staff both teaching, non-teaching and ancillary staff;



- expect all staff and volunteers working in the school to foster a positive atmosphere of mutual respect and trust among boys and girls from all ethnic groups and range of abilities;
- challenge stereotypes and foster pupils' critical awareness and concepts of fairness, enabling them to detect bias and challenge inequalities;
- take account of religious, cultural and ethnic differences, special educational needs, disability and the experiences and needs of all pupils, throughout our pastoral support;
- provide appropriate support for pupils learning English as an additional language and encourage pupils to use their home and community languages to enhance their learning;
- give appropriate support (using external agencies where required) to victims of harassment and bullying. The perpetrators are dealt with in line with the Whole School Behaviour Policy and are provided with relevant support to consider and modify their behaviour;
- ensure that guidance and support for pupils is delivered in a way that does not discriminate against pupils with the unseen (visual, hearing, mobility, cognitive and prone to seizure) impairments;
- ensure that pupils who are pregnant or have recently had a baby are supported and have access to education;
- ensure that appropriate and discreet facilities are available for those pupils who require personal or intimate care in order to protect their dignity and foster respect for their individual needs;
- ensure that staff are empowered to raise any concerns with the Senior Management Team relating to their health, safety and welfare by promoting well-being strategies among staff as a whole and in their respective groups.
- Flookburgh CE school expect work experience providers to demonstrate their commitment to equality, including disability, gender, race, faith/religion, gender reassignment etc. equality

### ***The Quality of Provision – Curriculum and Other Activities***

We aim to provide an appropriate curriculum for pupils of all backgrounds. To do this we will:

- monitor and evaluate its effectiveness through target setting and attainment analysis;
- ensure that all pupils participate in the mainstream curriculum of the school;
- develop and continuously monitor a curriculum which builds on pupils' starting points and is differentiated appropriately to ensure the inclusion of:
  - boys and girls
  - pupils learning English as an additional language
  - pupils from minority ethnic groups, including Gypsies and Travellers
  - pupils who are gifted and talented
  - pupils who are pregnant or who have recently given birth
  - pupils who are undergoing gender reassignment
  - pupils with special educational needs
  - pupils with a disability
  - pupils who are looked after by the Local Authority
  - pupils who at a risk of disaffection and exclusion
  - lesbian, gay or questioning young people
  - pupils who are the subject of child protection plans
- ensure that each area of the curriculum is planned to incorporate the principles of equality and to promote positive attitudes to diversity. All subjects contribute to the spiritual, moral, social and cultural development of all pupils;
- deliver a curriculum which reflects and values diversity. It encourages pupils to explore bias and to challenge prejudice and stereotypes;

- ensure extra-curricular activities and special events e.g. school performances, cater for the interests and capabilities of all pupils and take account of parental preferences related to religion and culture;
- ensure educational visits and excursions take account of the capabilities of all pupils including both physical and cognitive disabilities and cultural differences;
- make use of web-based technologies (web sites and the VLE) to support a high quality learning and teaching experience. This is delivered to all of our pupils irrespective of disability (e.g. visual, hearing, mobility, cognitive and prone to seizure impairments).

### ***Behaviour and Attendance***

Flookburgh CE Primary School expects high standards of behaviour from all pupils as appropriate for their developmental level, all staff and others who are working or connected with the school. Details of these expected standards are set out in the Whole School Behaviour Policy.

Through our school ethos and curriculum, we want our pupils to understand better the diversity that exists in society. We want to provide opportunities for them to explore the subtleties and complexities in order to prevent and respond to incidents and situations. We will address the experience, understanding and needs of the victim, the perpetrator, bystanders and the wider school community through our actions and responses. In order to ensure that the Whole School Behaviour Policy and associated policies are equitable, we:

- have procedures for disciplining pupils and managing behaviour that are fair and applied equally to all. All staff are expected to operate consistent systems of rewards and sanctions;
- recognise that cultural background and disability may affect behaviour. Our schools takes this into account when dealing with incidents of unacceptable behaviour;
- recognise that hate incidents or prejudice-based bullying behaviour is driven by negative assumptions, stereotypes or misinformation. These are then directed against an individual or group, based on difference (real or perceived), and linked to, for example, racism, homophobia, negative views of disabled people or sexism. We will take action to prevent, challenge and eliminate any such behaviour;
- have clear procedures in place so that all forms of bullying and harassment, including racism and harassment related to disability, sexism and homophobia, are dealt with promptly, firmly and consistently and are in line with relevant school policies such as those for anti-bullying and dealing with racist incidents. All forms of harassment are recorded, monitored and dealt with in line with relevant school policies;
- ensure that all staff are trained to deal effectively with bullying, racist incidents, racial harassment and prejudice and are offered support in handling such matters;
- encourage staff to explore their own views and attitudes to difference and to monitor their practice in relation to this Scheme. Adults in school take care to lead through example, demonstrating high expectations of all pupils;
- will take steps to ensure that pupils, staff and parents are aware of policies and procedures for dealing with harassment. They know that any language or behaviour, which is racist, sexist, homophobic or potentially damaging to any minority group, is always unacceptable;
- provide information and advice on attendance and exclusion to parents/carers in accessible formats such as relevant community languages and large print;
- have strategies in place to reintegrate long-term non-attenders and excluded pupils, which address the needs of all pupils;
- ensure that families are aware of their rights and responsibilities in relation to pupil attendance and absence and that cases are always followed up in a way that takes account of cultural issues or matters relating to a child's disability;
- make provision for leave of absence for religious observance, for staff as well as pupils;

- monitor attendance by gender, ethnicity and special educational need. Background is also considered. Action is taken in order to address any disparities between different groups of pupils;
- will fully support children with long-term medical needs who may have an erratic attendance because they are in and out of hospital or not well enough to attend school on a regular basis;
- expect full-time attendance of Traveller and Gypsy pupils whilst they are on the roll of the school.

### ***Partnership with Pupils, Parents, Carers and the Wider Community***

Flookburgh CE Primary School have established good links with our local and wider community. We welcome them into our school. From them, we learn about quality issues outside school and can establish mechanisms for addressing them within school.

Participation is based on information gained about representation of different groups. We aim to do this as fully as possible whilst recognising issues of sensitivity in relation to the different protected characteristics. We take particular steps to ensure disabled children and young people, parents and carers are involved as is their entitlement. To do this we will:

- involve stakeholders including pupils, staff, parents/carers and other users of the school in relation to all equalities duties;
- take into account the preferred means of communication for those with whom we are consulting e.g. translated materials or interpretation facilities for disabled people or those for whom English is an additional language or are newly arrived in this Country;
- include representation from the widest range of relevant groups that we can reasonably achieve;
- monitor parental involvement and have strategies to raise participation of under-represented groups of parents and sections of the community. Information and meetings for parents are made accessible for all;
- progress reports to parents/carers are clearly written and free from jargon to encourage parents to participate in their child's education. Where necessary, information is available in languages and formats other than English. Parents with a disability or with learning difficulties will be able to access school's information;
- parents are fully involved in the school-based response for their child with special educational needs, understand the purpose of any intervention or programme of action and are told about the parent partnership service when SEN is identified;
- encourage participation of under-represented groups in areas of employment e.g. through work experience placements;
- ensure that any informal events which we may hold are designed to include the whole community and at times may target minority or marginalised groups;
- work in partnership with parents and the community to address specific incidents and to develop positive attitudes to difference;
- ensure that the school's premises, grounds and facilities are equally available and accessible for use by all groups within the community.

### ***Leadership and Management***

Flookburgh CE Primary School have a clear admissions policy and procedures which are in line with those issued by Cumbria LA. Our aim is to ensure that our admission process is fair and equitable to all pupils. We will also ensure that our employment practices reflect equality and diversity. To do this we will:

- not discriminate against a disabled pupil in the arrangements we make for determining admission;

- admit pupils with already identified special educational needs. Pupils with statements of special educational needs will always be admitted unless, through the statutory assessment process, it is demonstrated that the pupil's inclusion would be incompatible with the efficient education of other children;
- gather comprehensive information about pupils' ethnicity, first language, religion, physical needs, diet etc. either via the admissions form or at the admissions interview;
- adhere to recruitment and selection procedures which are fair, equitable and in line with statutory duties of the Governing Body
- will take steps to encourage people from under-represented groups to apply for positions at all levels in the school and ensure recruitment and selection processes are monitored;
- ensure that everyone associated with the school is informed of the contents of this policy. All staff and visitors must support the ethos of the school, promoting equality and challenging bias and stereotyping wherever they observe it;
- ensure that staff training continually highlights equality issues. Equality is incorporated into the induction programme for new staff;
- recognise and value the skills of all staff, including non-teaching and part-time staff. All staff are given status and support and are encouraged to share their knowledge.
- ensure that staff handbooks and regular professional development activities are available for all staff members to support their practice in relation to this policy;
- ensure that resources and displays in our school reflect the experience and backgrounds of pupils, promote diversity and challenge stereotypes. They are reviewed regularly to ensure that they reflect the inclusive ethos of the school e.g. the inclusion of images relating to minority ethnic and Gypsy and Traveller children; displays to be positioned at eye level, etc.

### ***Linguistic Diversity***

We recognise and celebrate the linguistic diversity in British society. We look for opportunities to enrich the curricular experience of all our pupils by:

- highlighting how English has borrowed from other languages;
- raising awareness of the similarities and differences between English and other languages;
- reflecting the multilingual nature of wider society in our resources and displays;
- acknowledging the differences in syntax with non-spoken forms of English e.g. British Sign Language.

### ***Gender Equality***

Flookburgh CE Primary School is committed to combating sex discrimination and sexism and promoting the equality of women and men. We welcome the requirements of the Gender Equality duty and this section sets out our commitment to meeting the duty. We will give due regard to the need to:

- eliminate unlawful discrimination and harassment on the grounds of sex, including domestic violence, sexual violence, bullying and exploitation;
- promote equality of opportunity between women and men in all of our functions;
- recognise that society has stereotypes for both women and men, and both women and men can lose opportunities because of these stereotypes;
- be aware that staff with caring and domestic responsibilities may need to work part-time or flexible working hours;
- work in partnership with other agencies to eliminate sexual harassment, domestic violence and other hate crimes;
- ensure the rights, under the Gender Recognition Act 2003, of transgender people (who have Gender Recognition Certificates).

## ***Admissions and Exclusions***

Our admissions arrangements are fair and transparent, and do not discriminate on race, gender, disability or socio-economic factors.

Exclusions will always be based on the school's Whole School Behaviour Policy. We will closely monitor exclusions to avoid any potential adverse impact and ensure any discrepancies are identified and action taken to eliminate these. In addition, we will:

- monitor exclusions by gender, ethnicity and special educational need. Background is also considered. Action is taken in order to address any disparities between different groups of pupils;
- take all reasonable steps to prevent the exclusion of a pupil for a reason related to any disability they may have;

## PART 2

# Flookburgh CE Primary School – Single Equality Scheme Objectives

## 1. Our School Profile

Flookburgh Church of England School is a much smaller than average-sized primary school and nursery in South Cumbria. The school serves the rural communities of Flookburgh, Cark, Holker and Ravenstown. There are currently 75 pupils on roll; 69 pupils in Reception to Y6. The Nursery has a staggered entry over the three school-terms increasing the number of pupils on roll throughout the year. Our children benefit from this Nursery provision which allows the children to settle very quickly into the school environment and enables the EYFS staff to get to know the pupils really well, to make initial assessments and form relationships prior to the start of the new school year.

There are four, mixed-age, classes taught in the morning:

**Class 1** – Nursery/Reception; **Class 2** – Y1/Y2; **Class 3**- Y3/Y4 and **Class 4** – Y5/6.

There are three classes taught in the afternoon:

**Class 2** – Reception/Y1/Y2; **Class 3** – Y3/Y4 and **Class 4** – Y5/Y6.

The school also has a dedicated Nurture Group, which, from September 2016, operates each afternoon, to support children who may be experiencing difficulties in accessing the curriculum due to emotional, social or behavioural difficulties. The children within this group receive specific and personalised support to enable them to eventually return to a main class structure.

The school is a member of the South Lakes Rural Partnership (SLRP), an alliance of thirty-two other schools; it is also an active member within its local cluster of schools collectively known as, Cartmel Peninsula Heads.

Pupils at the school are of mainly white British ethnicity who are taught in mixed-age classes. We have a number of vulnerable groups including those with special educational, learning and medical needs.

Attendance figures for the vast majority of pupils are very good and above the national, minimum target of 90%.

We are a Foundation School with a strong Christian ethos which enables us to provide a holistic approach to the education of all of our children to ensure that we develop, and nurture, the whole child.

Through our Admissions Policy and when we are made aware of pupils who are joining the school with disabilities, we make arrangements to meet both the pupil and the parents and involve professionals from the Local Authority and the Health Authority in order to ensure that any adjustments required to the school building, for instance, or specialist equipment needed, are made in readiness for the pupil starting school. The school is currently in the process of reviewing its accessibility for all pupils, in particular for those pupils with a specific special educational need or disability. The school Nursery has fully ramped access and is level throughout the building enabling access to any wheelchair users. Our reception area is accessible to disabled people. We have one disabled toilet which also contains an adjustable changing bed for use by those pupils who need personal care whilst at school.

Information for parents and others is provided in written and verbal form. All information is offered in alternative formats on request.

Recruitment procedures are based on those provided by the LA with all advertising being processed through the County HR and Advertising Team.

## 2. Disability Equality Duties

Flookburgh CE Primary School's commitment to disabled pupils, their families and staff's equality has four objectives:

We will promote equality for disabled people by:

- removing barriers to accessibility, particularly in relation to education, employment and access to services, information and buildings;
- encouraging good practice by our partners through our advisory capacity;
- ensuring we take their needs into account when procuring goods and services from our providers;
- promoting positive images of disabled people;
- challenging patronising or discriminating attitudes;
- making the environment as safe as possible for and challenging antisocial or bullying behaviour against, or harassment of, disabled pupils, staff and families.

We plan to increase access to education for disabled pupils by:

- increasing the extent to which disabled pupils can participate in the school curriculum;
- increasing the inclusion of positive images of disabled people across the curriculum;
- improving the environment of the school to increase the extent to which disabled pupils can take advantage of education and associated services;
- improving the delivery of information to disabled pupils, to the standard of which is provided in writing for pupils who are not disabled;

We welcome the requirements of the Disability Equality duty and this section sets out our commitment to meeting the duty. Our Scheme shows how we promote disability equality across all areas of the school, to disabled pupils, staff, parents, carers and other school users.

### **Actions to be taken:**

- Investigate solutions if required to provide full access to the building for wheelchair users or those who are visually impaired
- Ensure good contrast between floor and walls when redecorating any part of the building.
- Ensure that clear markings are in place on outside steps to safeguard those who are visually impaired
- Ensure that additional lighting equipment within all classroom settings is in place

## 3. Racial Equality Duty and Community Cohesion

Flookburgh CE Primary school recognises that Black, Asian and Minority Ethnic (BAME) people experience discrimination on the basis of colour, race, nationality, religion and ethnic origin. Racial harassment and violence is one of the most serious consequences of racism, damaging people emotionally and physically and limiting life choices and opportunities.

The school will take all necessary measures to prevent and tackle racial harassment and assist BAME people to live in freedom from harassment and to feel safe as they enjoy and achieve throughout their education.

In order to comply with this duty, we will:

- keep accurate records of all ethnic and faith groups, their backgrounds and needs and how we respond to them;
- encourage dialogue between different racial groups on the appropriateness of our educational provision;
- prevent racial discrimination, and to promote equality of opportunity and good relations between members of different racial, cultural and religious groups;
- encourage pupils and their families of all ethnic groups to participate fully in all aspects of school life;
- use our support for the voluntary and community sector to promote good race relations;
- counter myths and misinformation that may undermine good community relations;
- ensure the school staff and other adults working within the school, pupils and their families as well as our partners and the wider community fully understand the principles of good race relations.

#### 4. Gender Equality Duties

In accordance with our Single Equality Scheme, we welcome the requirements of the Gender Equality duty and this section sets out our commitment to meeting the duty. We will give due regard to the need to:

- Eliminate unlawful discrimination and harassment on the grounds of sex, including domestic violence, sexual violence, bullying and exploitation;
- Promote equality of opportunity between women and men in all of our functions.

**Actions to be taken:**

- Male and Female attainment and achievement is continually monitored and tracked using the school tracking system and systems are in place to address any imbalance between male/female attainment and/or achievement
- Both male and female pupils have equal opportunities to access all areas of the curriculum including participation in out of school activities and sports
- SMSC provision is of a high quality throughout the school

#### 5. Religion and Belief Equality Duties

Flookburgh CE Primary School recognises that people can face discrimination because of attitudes in society towards the faith communities to which they belong. Faith-based hate crime has been on the increase in recent years, developing a character that is distinct from race hate crime.

The school also recognises that a person's religious (or similar) beliefs may mean that they have different needs, demands and expectations, which require flexibility.

The school is committed to eliminating illegal discrimination and exclusion on the basis of religion or belief.

Our school recognises the need to consider the duties which require us to assess the impacts of our policies, functions and procedures have on promoting equality for people based on their religion, belief or non-belief.

**Actions to be taken:**

- Alternative arrangements are put into practice through consultation with parents, as appropriate, to meet the needs of pupils in relation to non-participation in the school's dily acts of collective worship



- Alternative provision will be put in place for pupils during times of daily collective worship including, at times of religious celebrations eg Christmas and Easter

## 6. Sexual Orientation Equality Duties

Flookburgh CE Primary is committed to combatting discrimination faced by lesbians, gay men, bisexual people and transgender (LGBT). We aim to ensure equality of opportunity for LGBT people across services and employment.

We will respect the rights of individuals to be open about their sexual orientation, tackle homophobia, challenge stereotyping and improve knowledge about LGBT communities, both internally and to the community as a whole.

Our school recognises the need to protect pupils from unlawful discrimination and harassment on grounds of sexual orientation as required by the Equality Act 2010. We are committed to taking a proactive approach to preventing all forms of homophobia within the school and will assess the impacts of our policies, functions and procedures on promoting sexual orientation equality as part of the Equality Impact Assessment process.

We will deal with complaints of discrimination and harassment speedily and according to LA and national guidelines and notify complainants of the outcome and actions taken.

### **Actions to be taken:**

- Ensure that the school's Behaviour Policy is enacted, adhered to and followed by all members of the school community
- Ensure the promotion of British Values throughout the school

## 7. Publication of the Single Equality Scheme

Flookburgh CE Primary School Single Equality Scheme is published as a separate document and is available on request.

## 8. Complaints

If a member of the public feels that they have suffered harassment or being treated unfairly by the School because of their sex, colour, race, nationality, ethnic group, regional or national origin, age, marital status, disability, political or religious belief, sexual orientation or class they should report this without fail through the School's Complaints Procedure.

Complaints by staff will be dealt with under the Grievance Procedure, as appropriate.

We take all external and internal complaints seriously and will not tolerate any form of discriminatory behaviours. Complaints about staff will be investigated using the appropriate procedures.

Monitoring complaints is also an alternative method of gathering information to establish whether we are meeting our equality duties. We will report regularly to the Governing Body on complaints made and action taken.

## Key Legislation

### Equality Act 2010

On 1 October 2010, the Equality Act 2010 replaced all existing equality legislation such as the Race Relations Act, Disability Discrimination Act and Sex Discrimination Act. It has consolidated this legislation and also provides changes particular to Schools.

The Act protects staff, pupils and others from discrimination and harassment based on ‘protected characteristics’:

- Disability
- Gender
- Race
- Age (staff only)
- Religion and belief
- Sexual orientation
- Gender reassignment
- Marriage and Civil Partnership
- Pregnancy and maternity

This relates to:

- Prospective pupils
- Pupils at the school
- In some limited circumstances, former pupils

### **Public Sector Equality Duties**

Public sector equality duties are legal requirements on public bodies to have ‘due regard’ to the need to eliminate discrimination, advance equality of opportunity and promote good relations between people with different protected characteristics when they are exercising their public functions.

The purpose of the Equality Duties are not to be process driven and bureaucratic but rather an outcome based method of ensuring that schools are best meeting the needs of all their pupils. Prior to April 2011 maintained schools and Academies were bound by the three public sector equality duties to promote disability, race and gender equality.

The Equality Act 2010 introduces a *single* equality duty on public bodies. The single equality duty came into effect in April 2011 and has three main elements. In carrying out their functions, public bodies will be required to have due regard to the need to:

- Eliminate conduct that is prohibited by the Act,
- Advance equality of opportunity between people who share a protected characteristic and people who do not share it,
- Foster good relations across all characteristics – between people who share a protected characteristic and people who do not share it.

### **New Protection in Schools**

Protection against discrimination is now extended to pupils who are pregnant or have recently given birth, or who are undergoing gender reassignment.

## Health Related Questions for Job Applicants

It is now unlawful for employers to ask health-related questions of applicants before a job offer, unless the questions are specifically related to an intrinsic function of the work. This means that schools should no longer, as a matter of course, require job applicants to complete a generic health questionnaire as part of the application procedure. DfE are considering the implications of this in relation to existing guidance for schools on establishing fitness and ability to teach (as required by the Health Standards (England) Regulations 2003). In the meantime, schools are advised to review their existing practices to ensure they are complying with both the Health Standards Regulations and Section 60 of the Equality Act 2010. Schools may decide to ask necessary health questions after job offer. In any case, they should ensure that any health-related questions are targeted, necessary and relevant to the job applied for.

## Positive Action

New Positive Action provisions will allow schools to target measures that are designed to alleviate disadvantages experienced by, or to meet the particular needs of, pupils with particular protected characteristics. Such measures will need to be a proportionate way of achieving the relevant aim. Previously a school providing – for example – special catch-up classes for Roma children or a project to engage specifically with alienated Asian boys might have been discriminating unlawfully by excluding children who didn't belong to those groups.

## Victimisation

It is now unlawful to victimise a child for anything done in relation to the Act by their parent or sibling.

## Auxiliary Aids

The Act extends the reasonable adjustment duty to require schools to provide auxiliary aids and services to disabled pupils. At the time of writing, the relevant provisions of the Act relating to this area had not come into force. Schools will be advised of when this is the case.

## Publication of the Scheme

Details of the school Scheme and the objectives must be published by 6 April 2012.

## Accessibility Planning

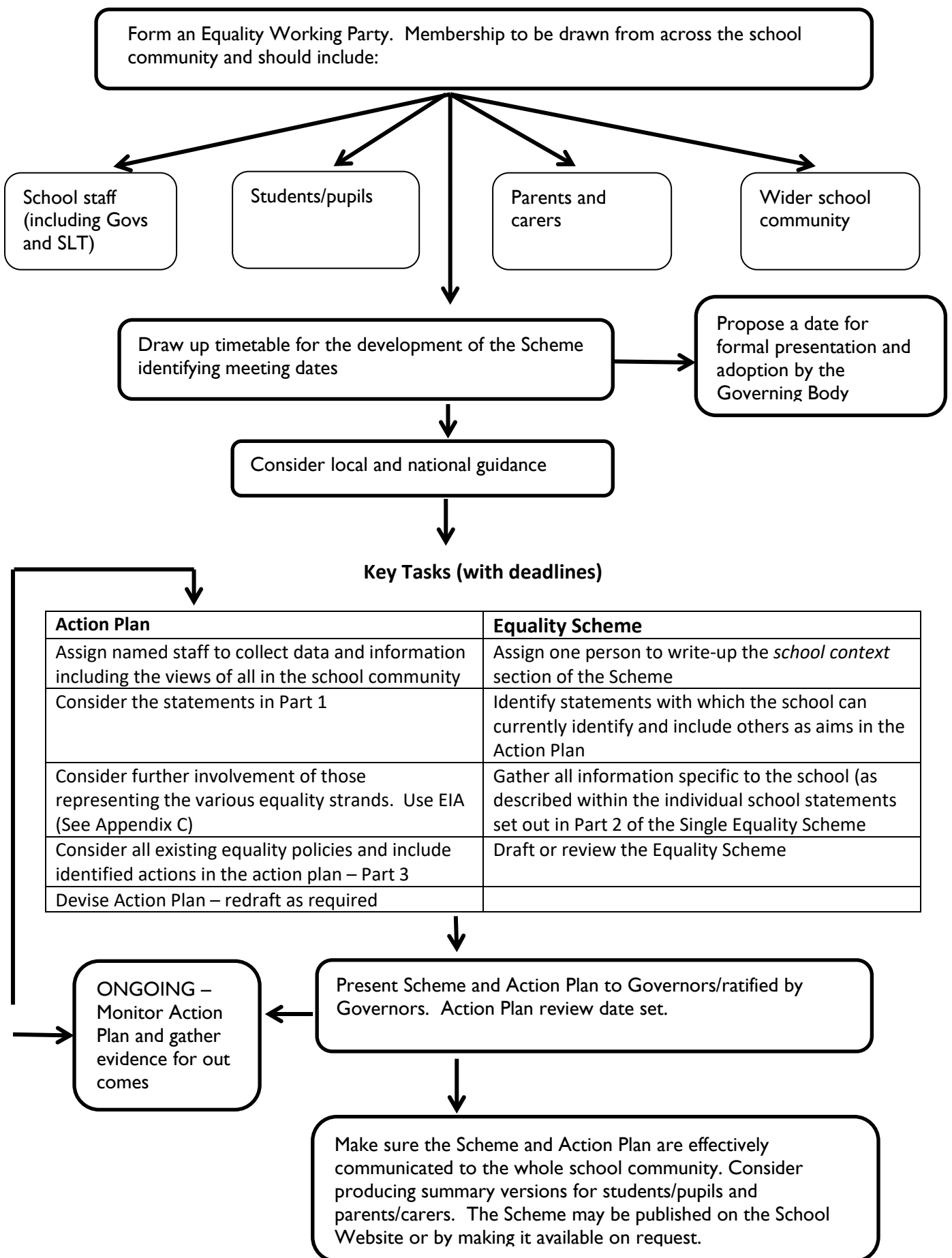
Accessibility planning is a statutory duty and can be incorporated into the Single Equality Scheme. Your Accessibility Plan can, if you wish, be provided as an Appendix to the Single Equality Scheme.

Schools must plan for:

- Increasing access for disabled children and young people to the school curriculum
- Improving access to the physical environment of schools; and
- Improving the delivery of written information to disabled children and young people

The first plans were required to be in place by April 2003. Therefore as schools come to review their accessibility plans they should consider building these actions into their Equality Scheme.

Process Chart for the Development and Review of Equality Scheme, Objectives and Action Plan



# Single Equality Scheme – Objectives and Action Plan

## NB;- SEE SEPARATE ACTION PLAN DOCUMENT

### Action Planning Principles

- Identification of objectives and subsequent action planning is undertaken in accordance with the School's values, priorities and aims as identified in Part A of our Single Equality Scheme.
- Accurate knowledge of the school enables us to plan in a way that is **relevant and proportionate**.
- **Participation** of an appropriately selected working group is reflected in wider representation built into action plans.
- Through the Equality Impact Assessment process, consideration is given to the **anticipation** of equality issues not presently evidenced but for which there is a potential.
- Action plans are seen as the starting point for action but not followed slavishly where monitoring and further Impact Assessments reveal alternative opportunities or needs.
- Managing the process in a planned yet responsive way.
- Action plans are checked against the objectives and the Impact Assessment that informed their selection.
- SMARTER target thinking means plans are **Specific, Measurable, Achievable, Relevant, Timed, Evaluated and Reviewed**.
- The golden rule for action planning is to **be SMARTER and get started**.

### The Process:

- Action planning is done in response to identified priorities arising from the analysis of all the information, including the Overview of Outcomes and the Equality Impact Assessments we have undertaken.
- We plan for action over 1 and 3 years so that it is possible to implement change and development in a responsive yet systematic way.
- Action plans are reviewed annually and in the third year we undertake a review of the impact of our actions over three years.
- Initially, many of our actions have been in relation to ensuring that we establish our Single Equality Scheme effectively and embed the process of Equality Impact Assessments more widely throughout our thinking and initial planning.



